



COLORADO™

JOBS, PEOPLE & MIGRATION IN COLORADO

DABE

Chris Akers

State Demography Office

January 2018



COLORADO

Department of Local Affairs

BIG PICTURE - 2016-17 POP CHANGE

- U.S. Population 2017: 325.7 Million +2.3 Million (0.7%)
- Colorado 2017 (Census): 5,607,154
- 9th fastest growth: 1.4% - ID, NV, UT, WA, FL
- 8th total growth: 77,049 - TX, FL, CA, WA, NC, GA, AZ
- Range in Colorado Counties in 2017
 - +12,000 to -470

QUICK FACTS ON COLORADO'S POPULATION

- 6th fastest growth Apr 2010 to July 2017 @ **11.5%** - DC, TX, ND, UT, FL,
- 8th most growth Apr 2010 to July 2017 @ **577,958** - TX, CA, FL, GA, WA, NC, AZ (**61%** of growth from migration)
- Median Age: **36.7** (12th lowest) - UT, AK, DC, TX, ID
- **13.4%** over age of 65 - AK, UT, DC, TX, GA
- **21.3%** Hispanic - NM, TX, CA, AZ, NV, FL
- **11%** Poverty (11th lowest) - NH, HI, MD, CT, AK, MN



Colorado

2017

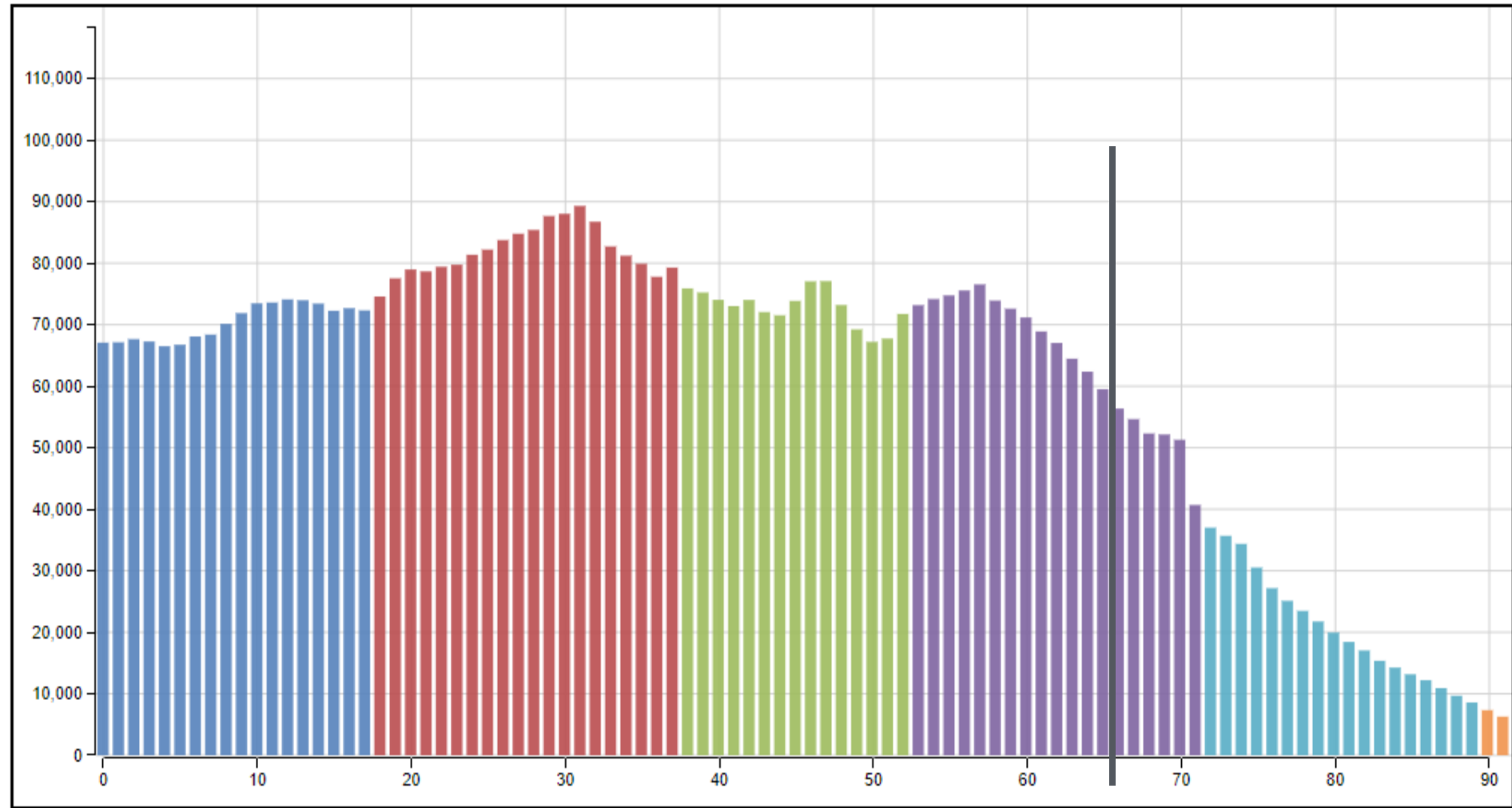
Animate

Download Image

Download Video

Colorado

2017



Next Generation (2000+)

Millennial (1980-1999)

Gen X (1965-1979)

Baby Boomers (1946-1964)

Silent Generation (1928-1945)

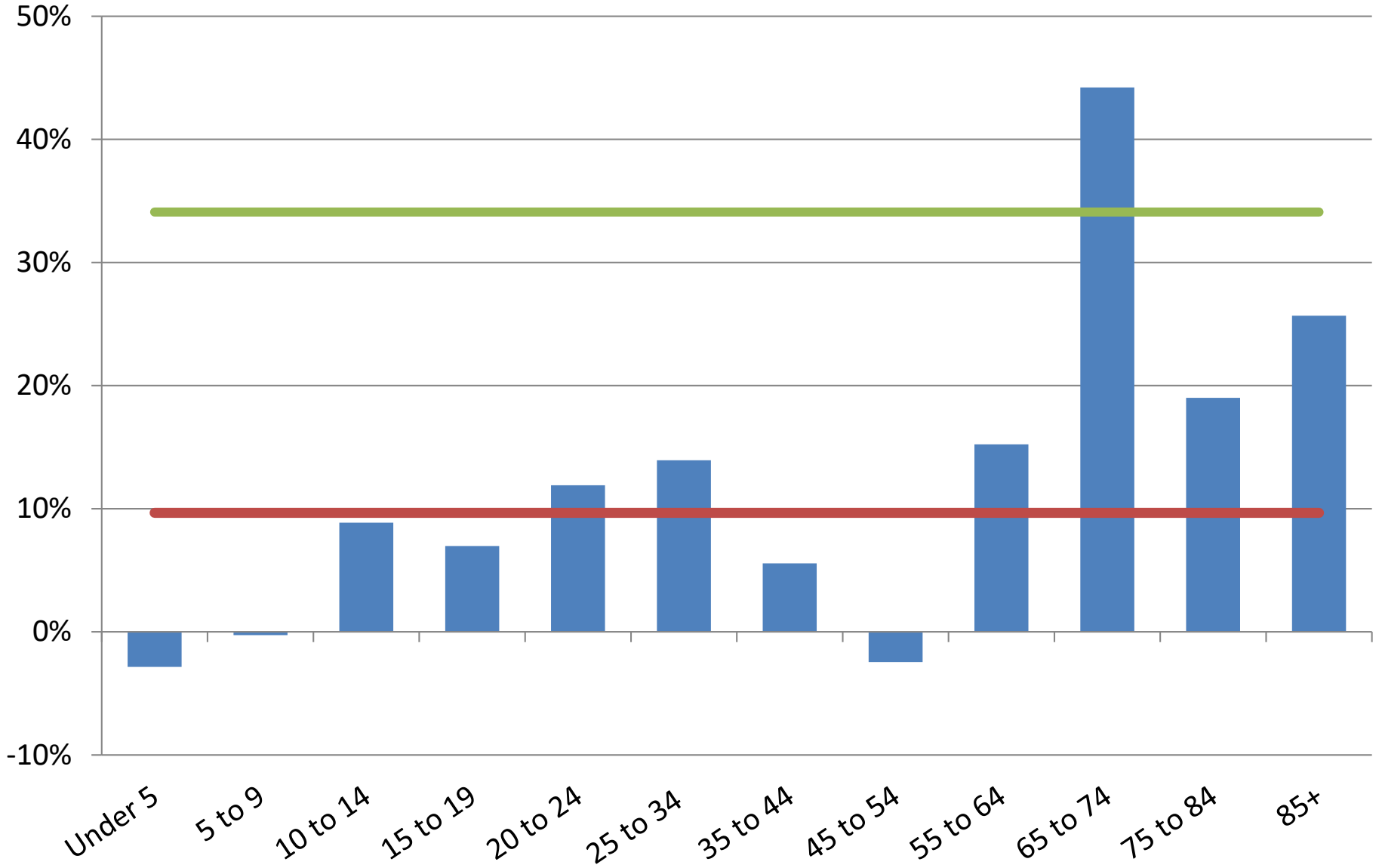
Greatest Generation (- 1927)



COLORADO'S RAPID AGING

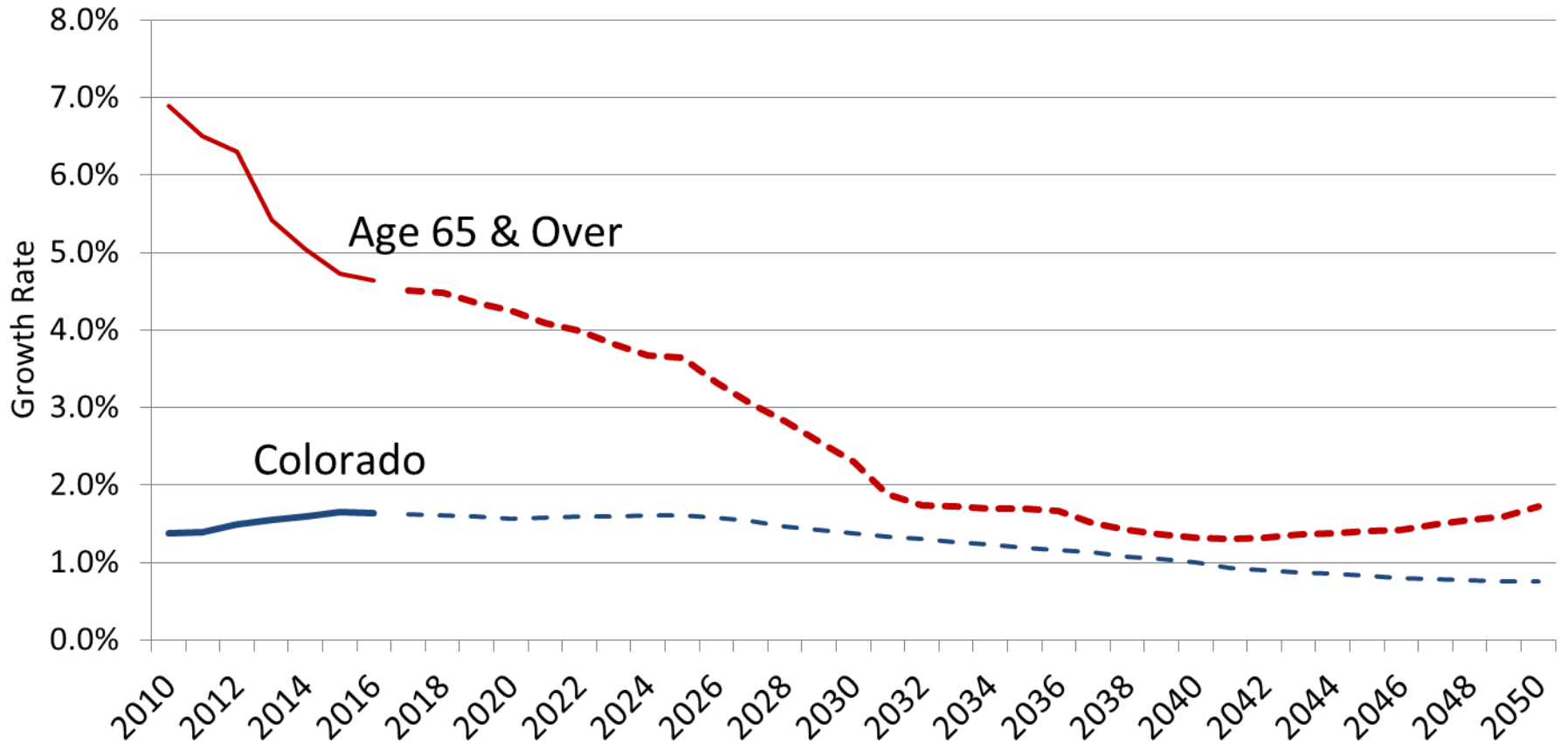
- Every County experienced growth in the population over age 65 from 2010-2016.
- Currently 6th youngest (share of population 65+, 13.4%)
- 3rd fastest growth in 65+ population in Nation from 2015-16.
- By 2030 we will look more like the Nation.
- Median age is forecast to increase from 36.7 to 40.7 by 2050.
- Statewide current residents aging 95% of growth 65+.

Colorado Population % Change by Age Group, 2010 - 2016



Older Age Population in Colorado

Much higher growth rate than other age groups in Colorado.

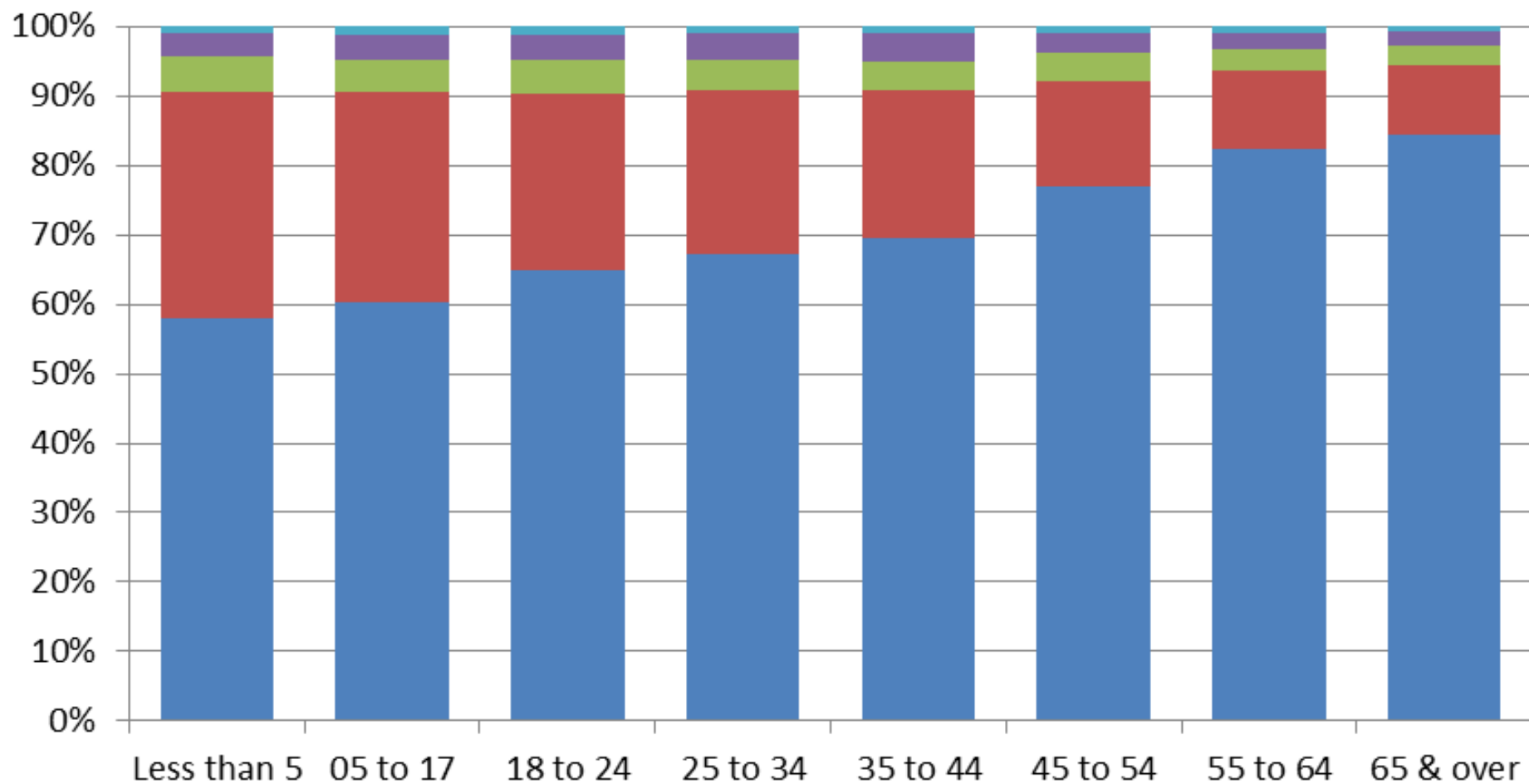


IMPACTS OF AGING

- Economic impacts from retiring spending
- Changing housing needs
- Health care demands
- Public finance concerns
- A tighter and slower growing labor market
Largest increase in Labor Force leavers between 2020-2025
 - 2000-2010 = 300,000
 - 2010-2020 = 400,000
 - 2020-2030 = 600,000

2010 Colorado Population by Race/Ethnicity and Age

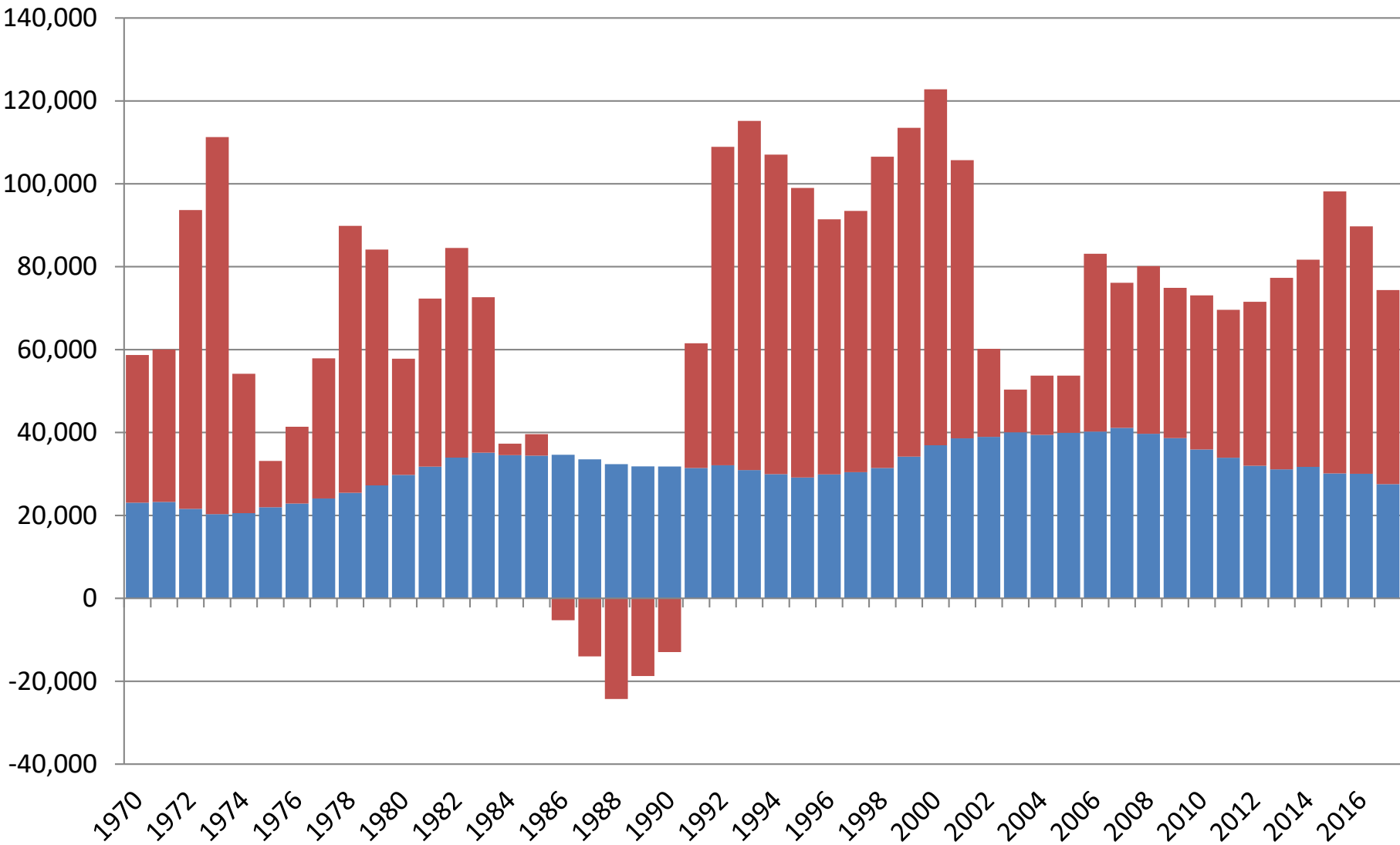
WhiteNonHispanic Hispanic BlackNonHispanic
AsianNonHispanic AmIndNonHispanic



HOW, WHY & WHERE WE ARE GROWING?

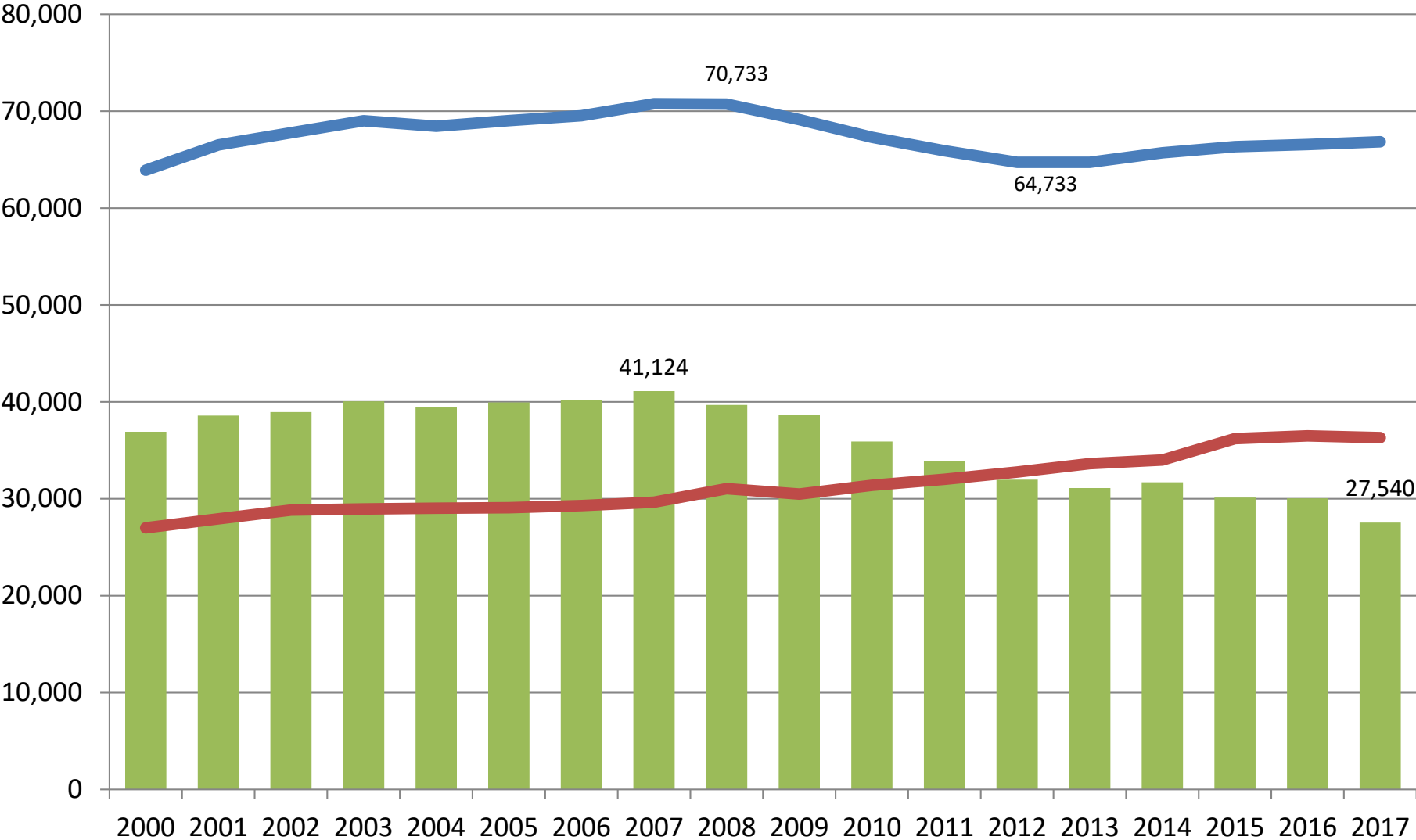
Components of Colorado Population Change 1970-2017

■ Natural Increase ■ Net Migration

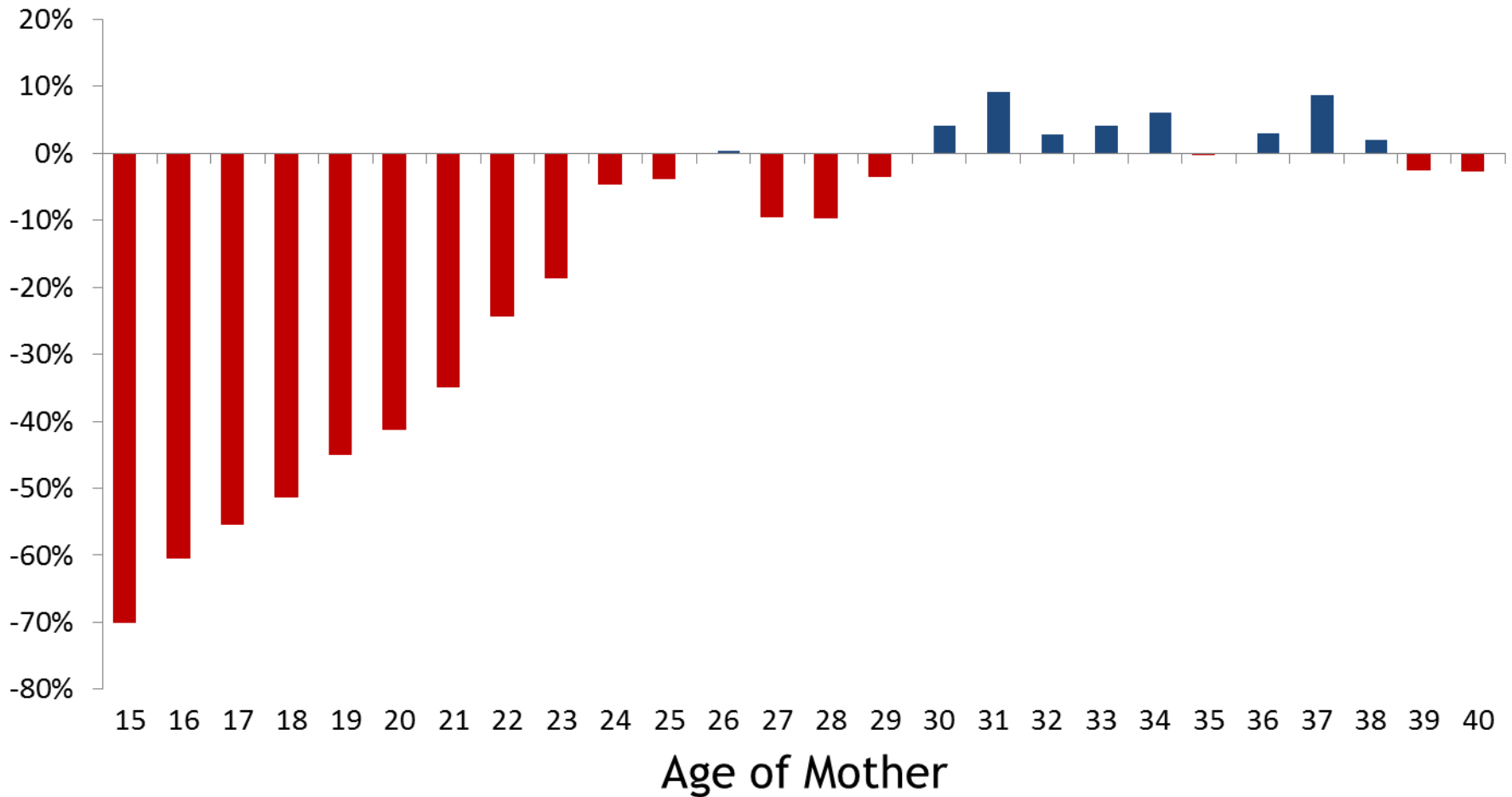


Colorado's Natural Increase Components

■ Natural Increase
 — Births
 — Deaths



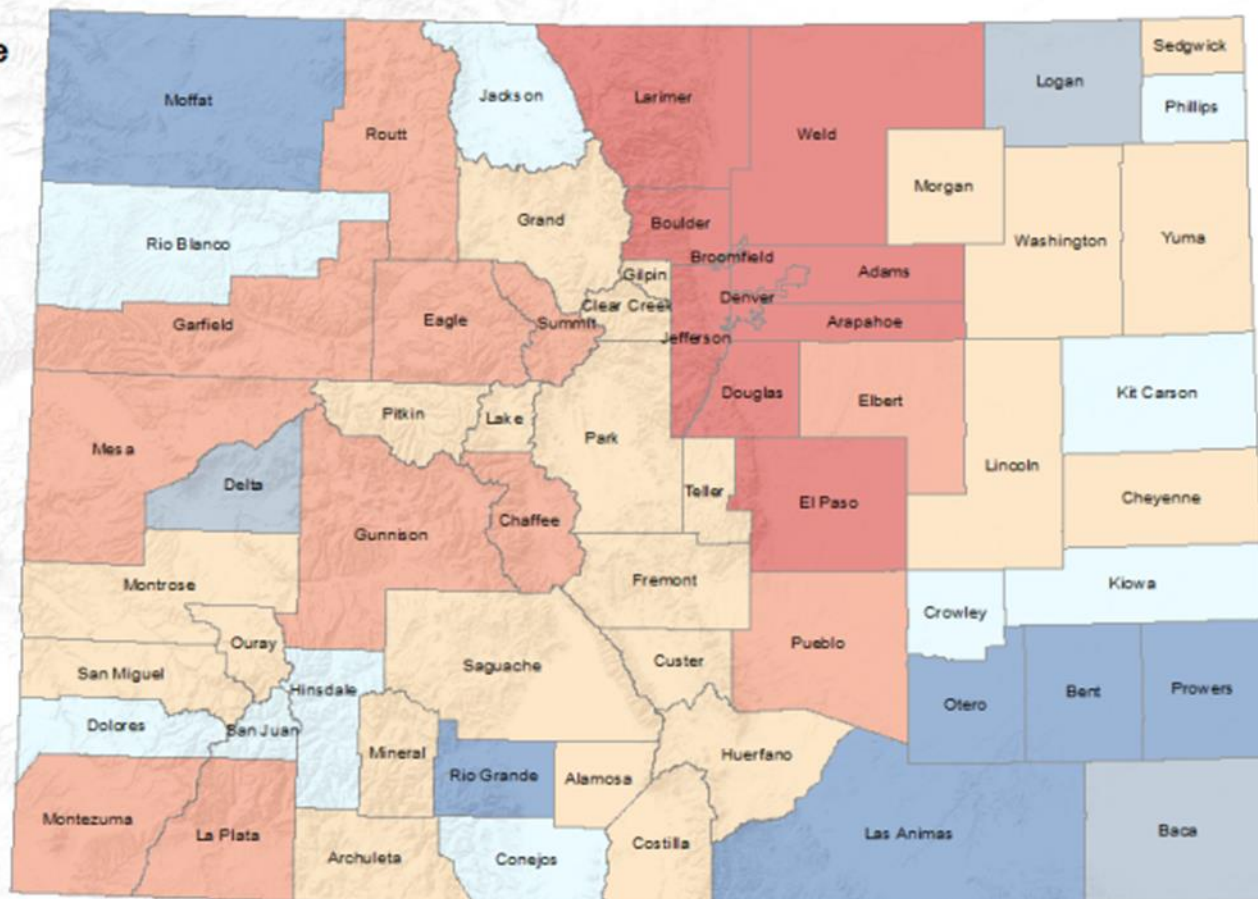
PERCENT CHANGE IN BIRTH RATE BY AGE 2009-16



Colorado: Total Population Change 2010 - 2016

Population Change

2010 to 2016

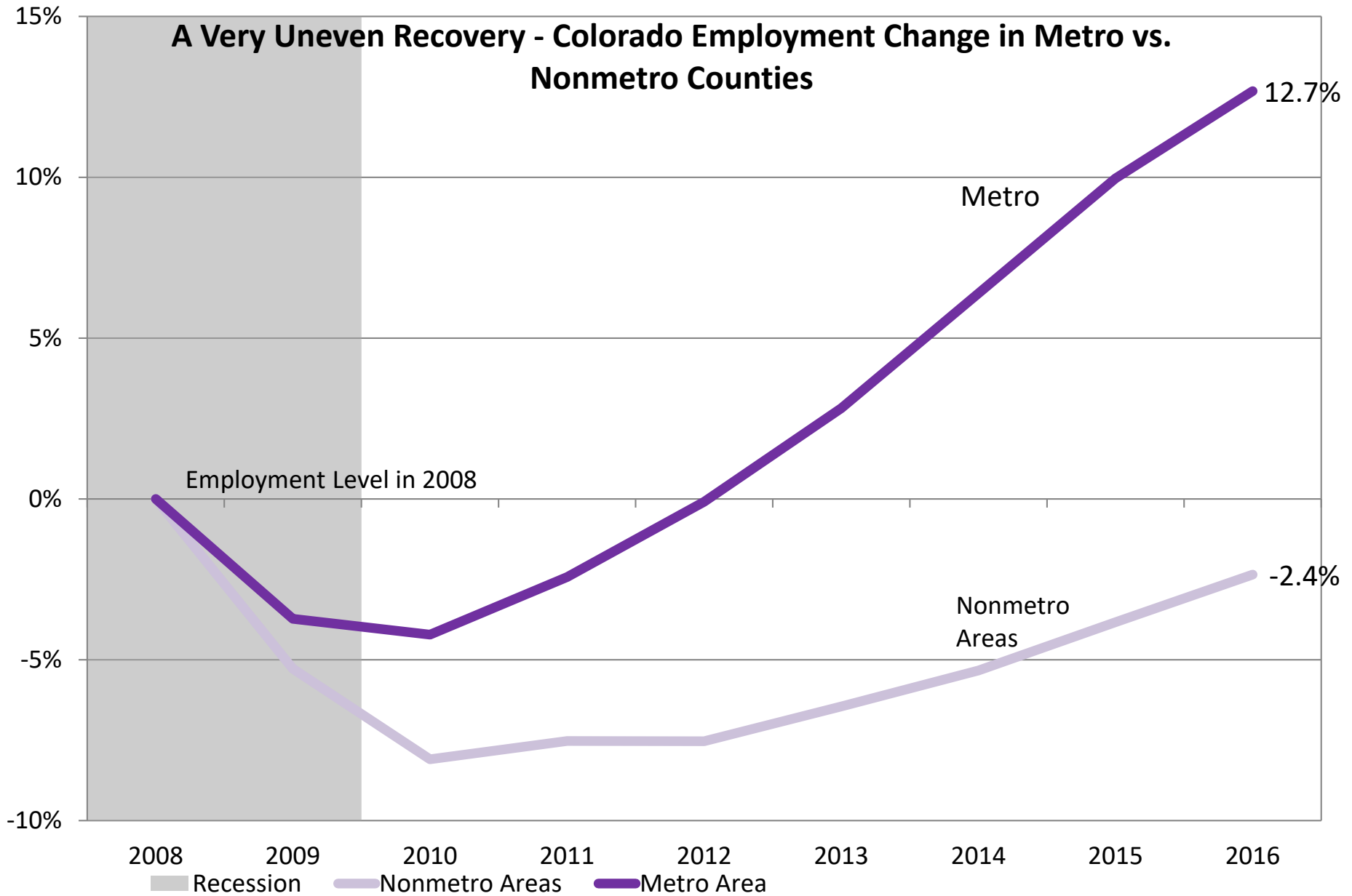


Colorado State Demography Office, 03/31/2017

Sources: Esri, USGS, NOAA

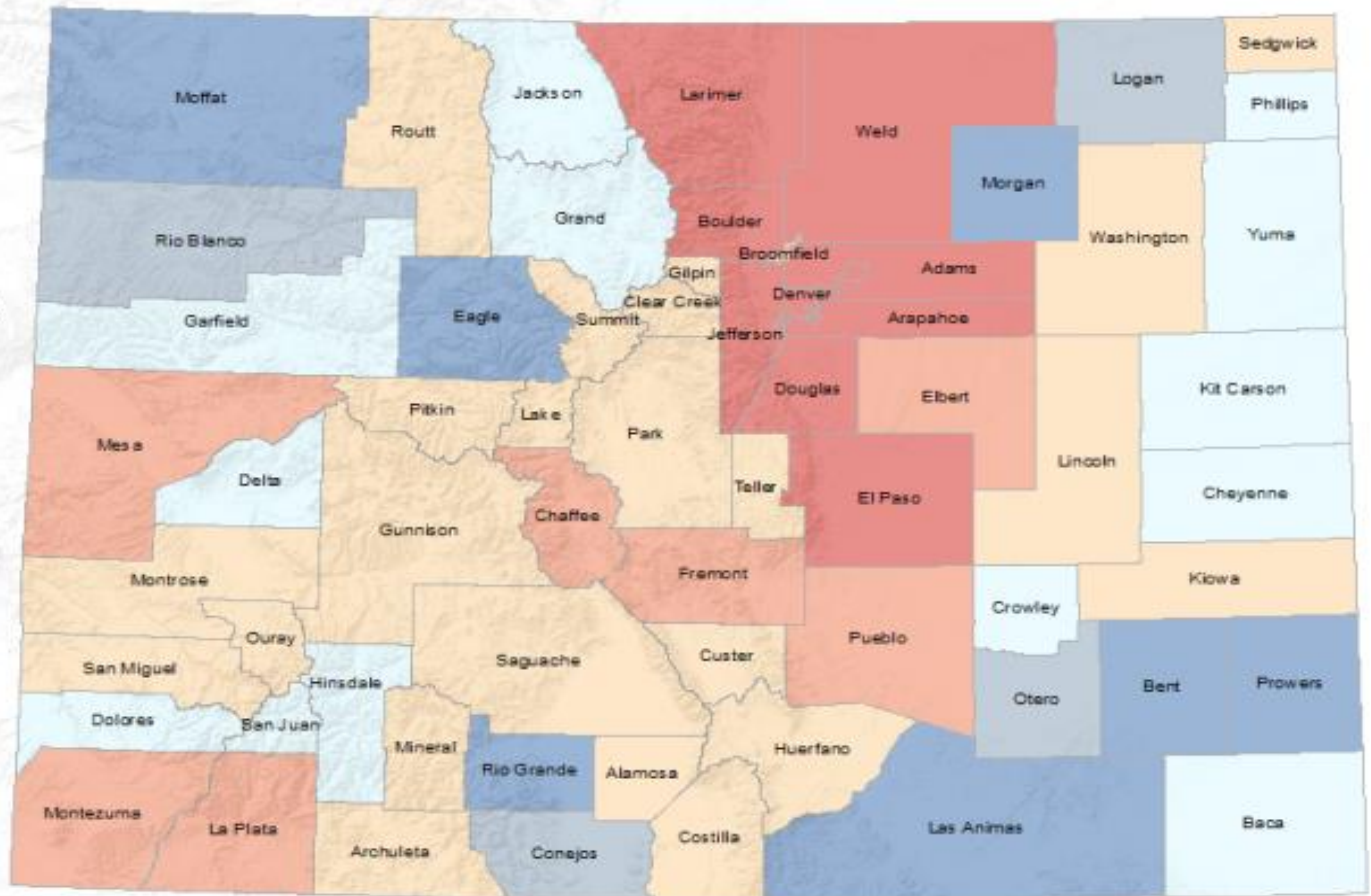


A Very Uneven Recovery - Colorado Employment Change in Metro vs. Nonmetro Counties



Colorado: Net Migration 2010 - 2016

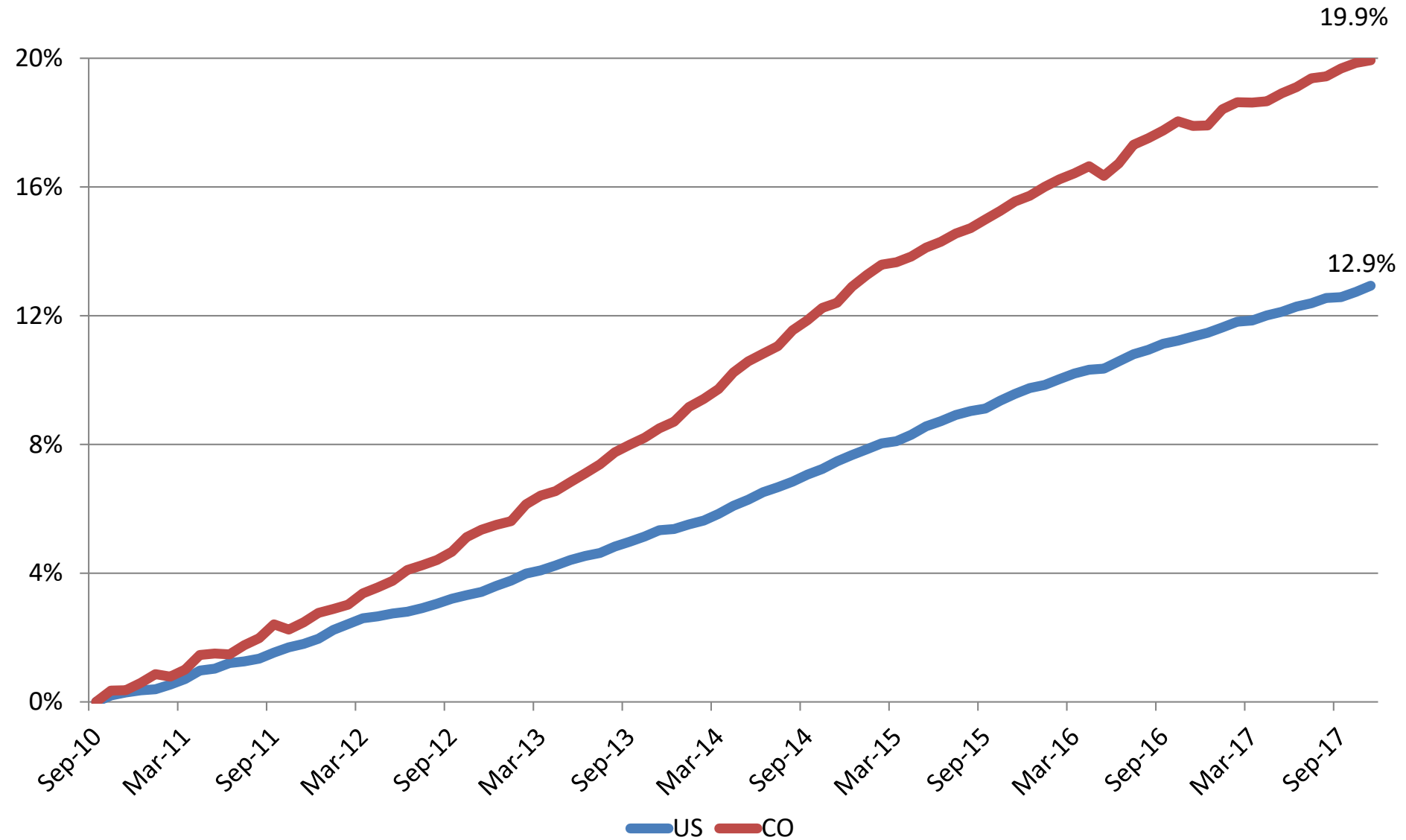
Net Migration 2010 to 2016



WHY ARE WE GROWING?



Employment (CES) Growth Sept. 2010 to Nov 2017



FASTEST GROWING STATES SINCE 2010 (JOBS)

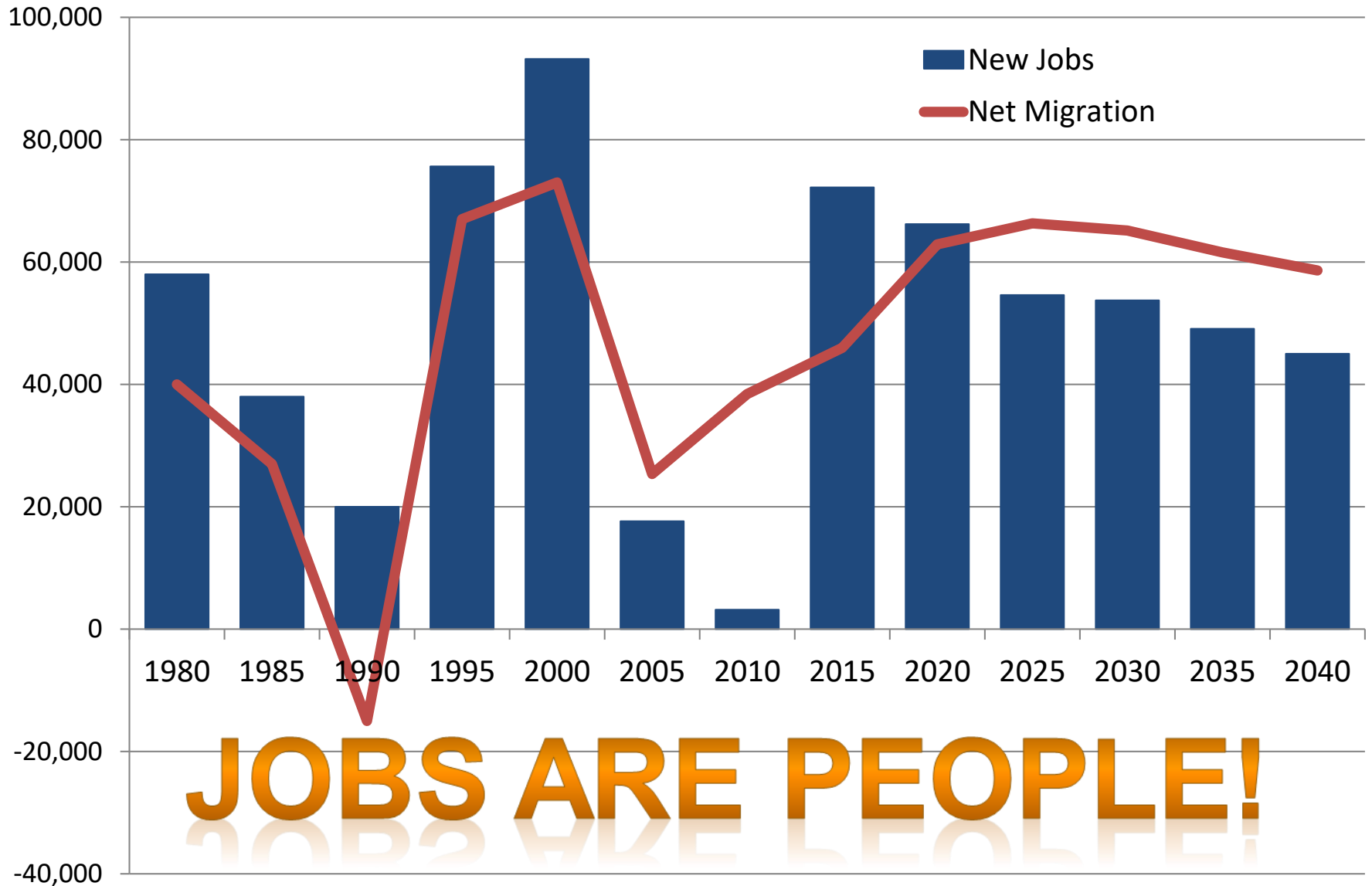
State	Total Employment (6/17)	Absolute Job Growth from 6/10	Percentage Growth from 6/10
Utah	1,440,251	279,993	24%
Colorado	2,638,826	435,928	20%
Nevada	1,333,476	215,615	19%
Florida	8,390,550	1,357,439	19%
Oregon	1,912,562	285,850	18%
Idaho	723,511	107,024	17%
Texas	12,059,558	1,815,683	17%
Washington	3,352,497	492,709	17%
California	17,150,900	2,532,987	17%
Arizona	2,699,634	387,934	17%
Top 10	51,701,765	7,911,162	18.1%
United States	145,186,369	15,848,003	12.3%



FASTEST GROWING STATES SINCE 2010 (POPULATION)

State	Total Pop (7/17)	Absolute Pop Growth from 4/10	Percentage Growth from 4/10
District of Columbia	693,972	92,249	15.3%
Texas	28,304,596	3,159,035	12.6%
North Dakota	755,393	82,802	12.3%
Utah	3,101,833	337,948	12.2%
Florida	20,984,400	2,183,090	11.6%
Colorado	5,607,154	577,958	11.5%
Nevada	2,998,039	297,488	11.0%
Washington	7,405,743	681,203	10.1%
Arizona	7,016,270	624,253	9.8%
Idaho	1,716,943	149,361	9.5%
Top 10	78,584,343	8,185,387	11.6%
United States	325,719,178	16,973,640	5.5%

Colorado New Jobs and Net Migration



JOBS ARE PEOPLE!

Source: State Demography Office



Population forecast methodology

Economic forecast

Jobs

- 2nd & 3rd job

- Commuters

Labor Demand

Cohort-component

+Births - Deaths

+ Net Migration

X LFPR

Labor Supply

=

Differences resolved by net migration

MIGRATION

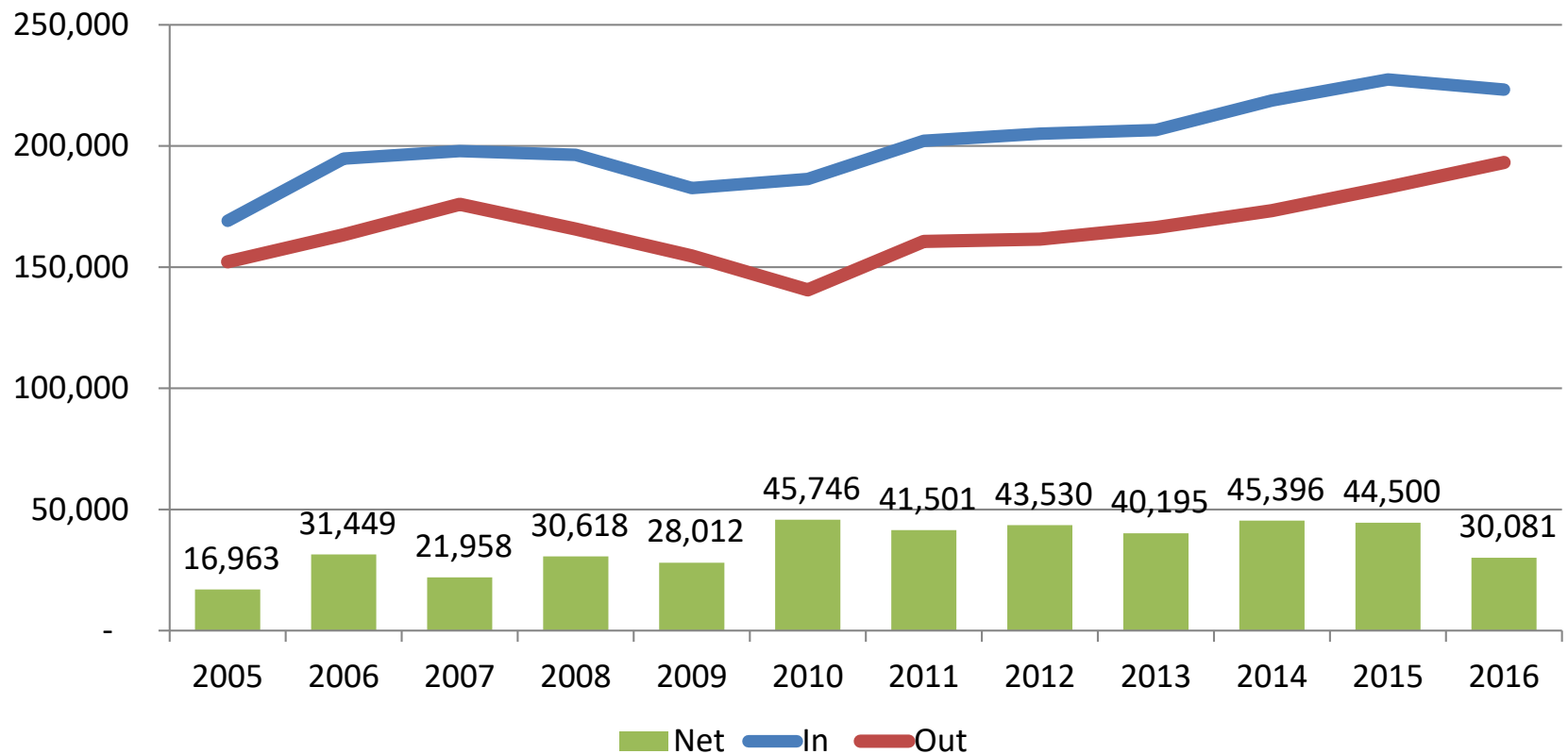


HOW MIGRATION IS COMPUTED

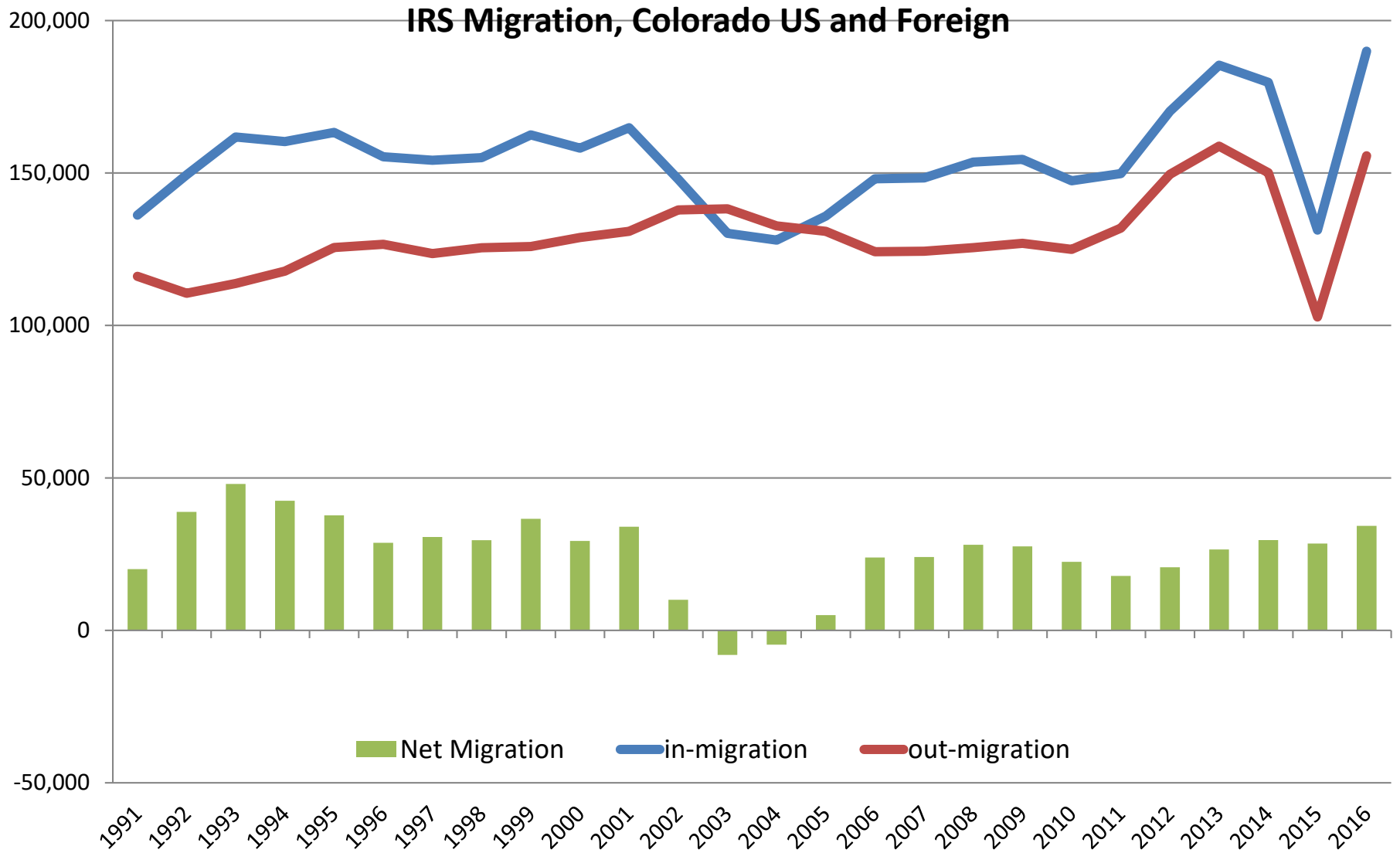
- Comes from the Census Bureau (FSCPE)
- 3 Sources:
 - IRS data on tax payer location
 - Medicare enrollment / payments
 - Census Model
- Migration can be calculated by taking difference of population change between decennial censuses less natural increase.

Colorado State to State Migration flow Time Series

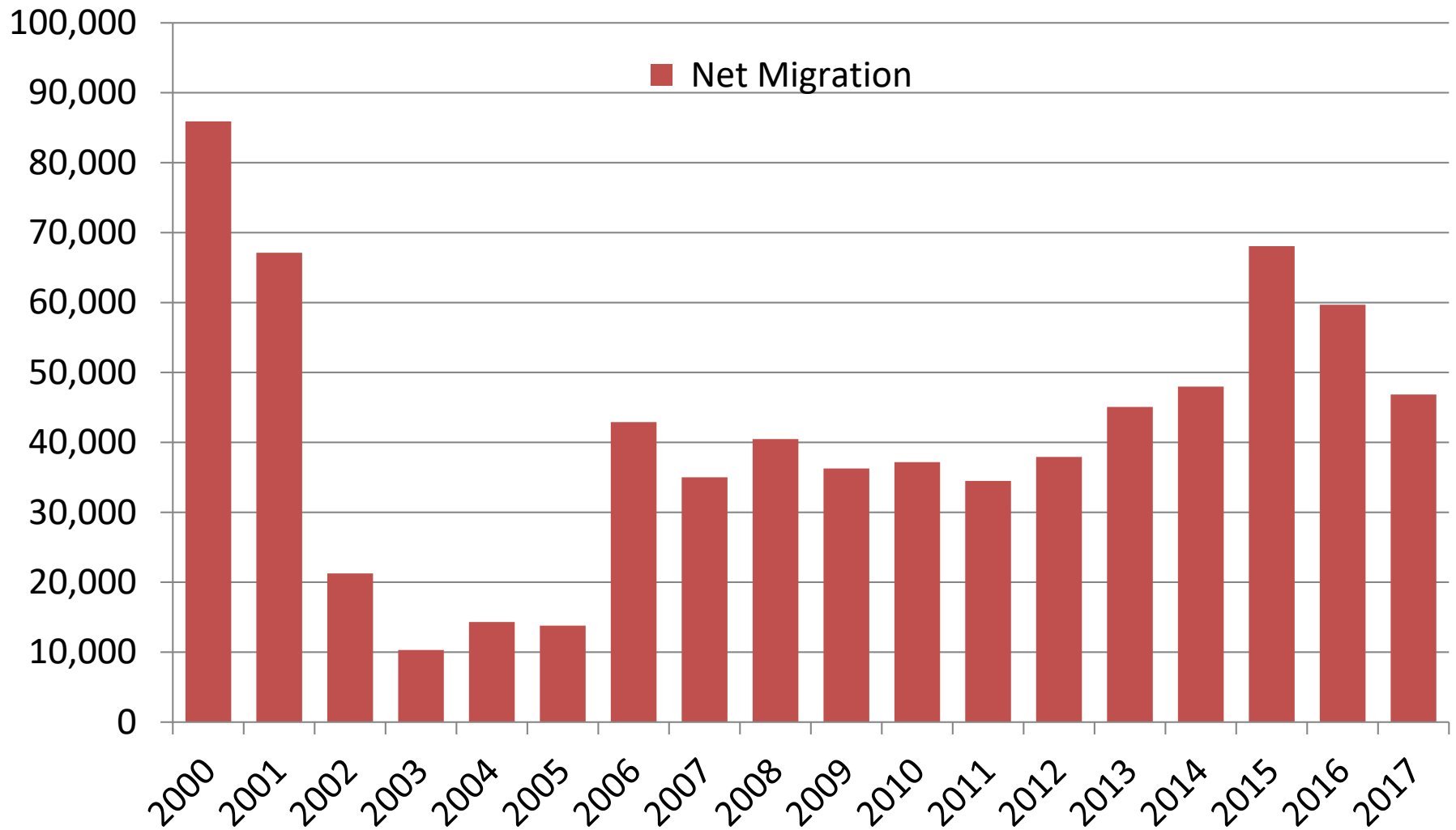
ACS CO Migration 2005 to 2016



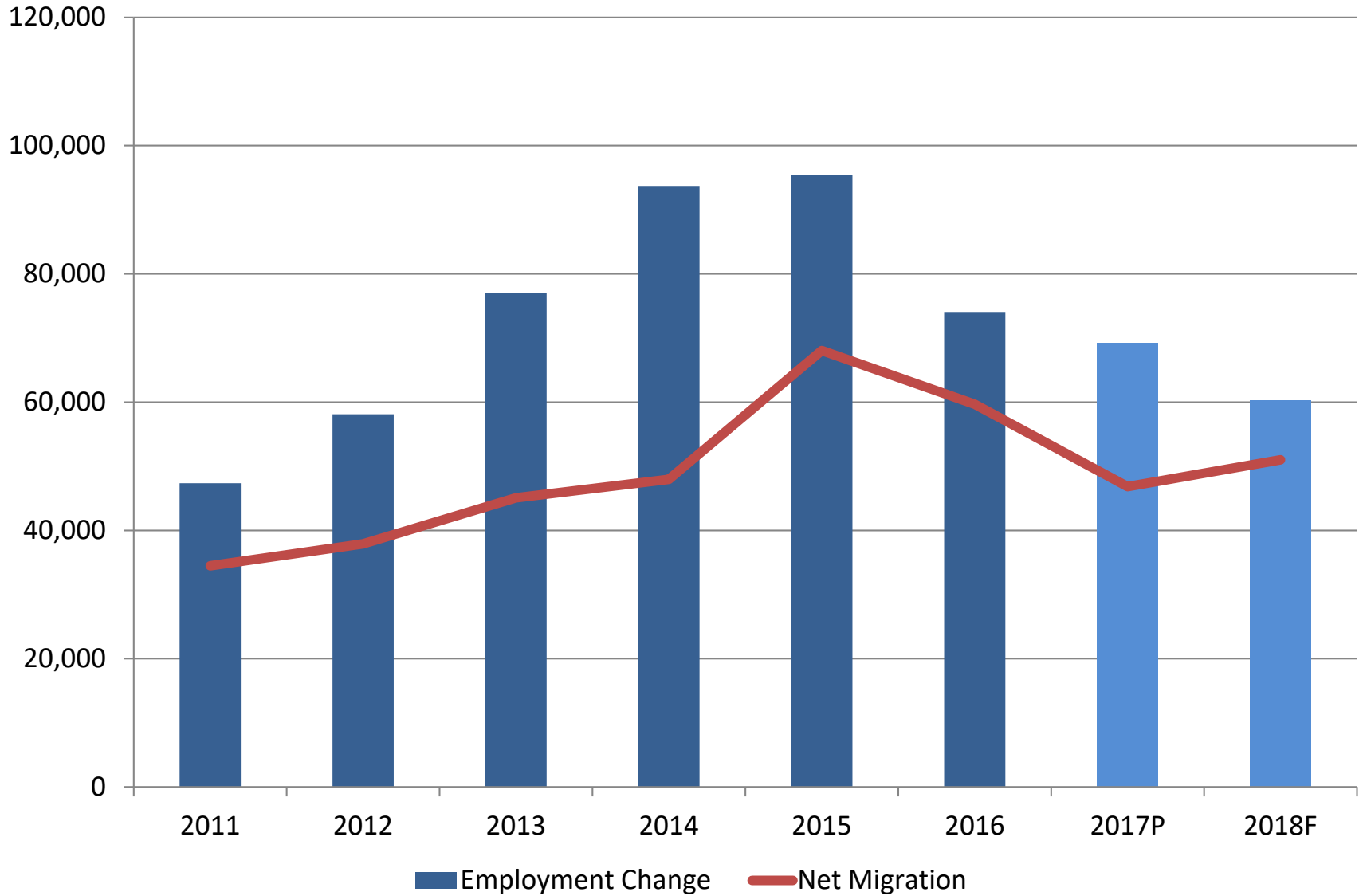
Colorado State to State Migration flow Time Series



Components of Colorado Population Change 2000 to 2017

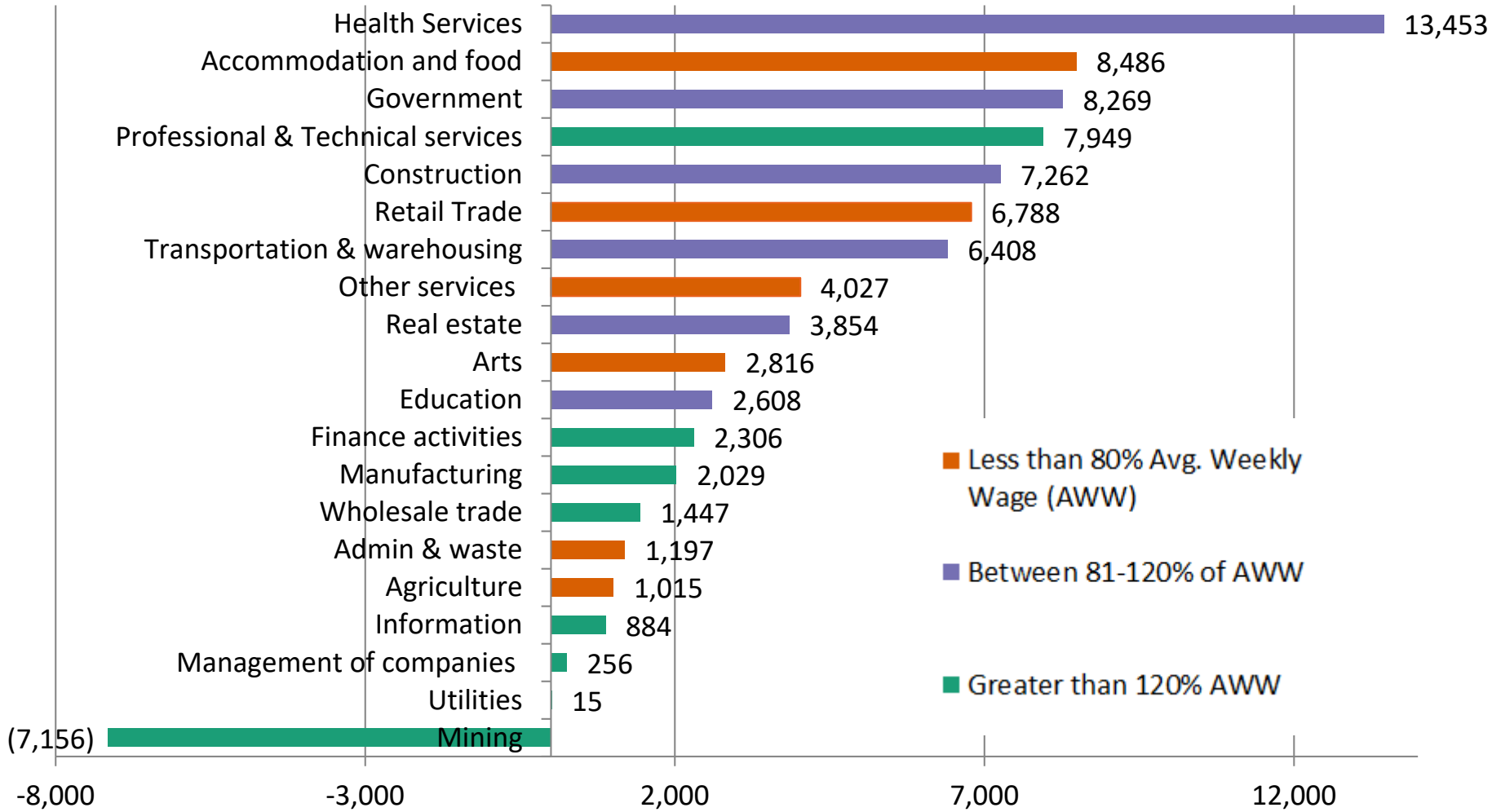


Colorado Employment Change and Net Migration 2011 to 2018



2016 Employment Change

2016 SDO Job Change by Industry Over the Year (74K)



Colorado State to State Migration

2016

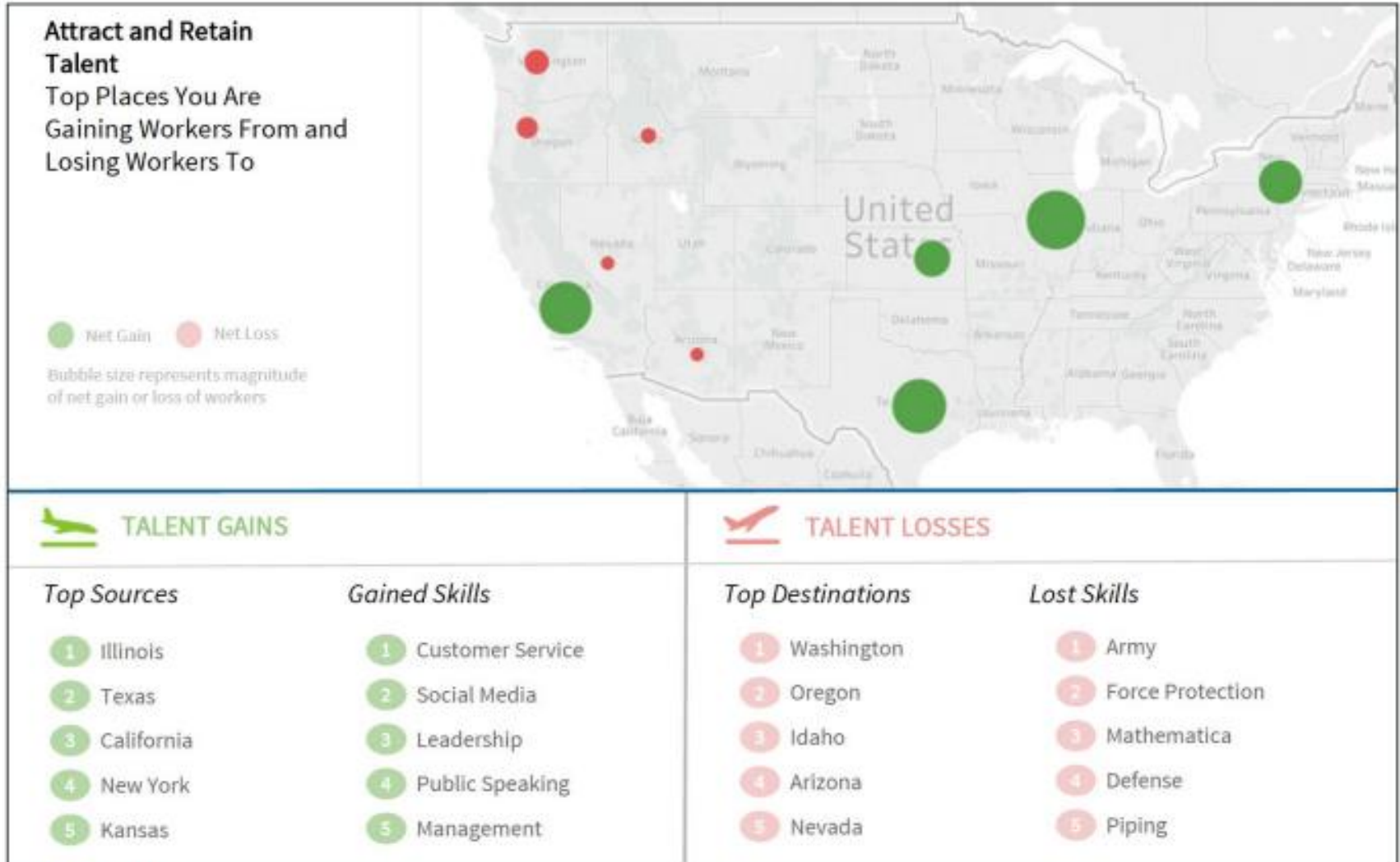
In		Out		Net	Gainers	Net	Losers
California	26,909	California	22,540	Illinois	8,112	Washington	-8,525
Texas	20,725	Texas	21,596	New York	5,149	Arkansas	-2,651
Florida	13,546	Washington	13,012	California	4,369	Nebraska	-2,507
Arizona	13,015	Arizona	11,895	Virginia	3,879	Idaho	-1,507
Illinois	11,369	Florida	9,880	Florida	3,666	Montana	-1,187

- In migration has been around 205,000-230,000 annually since 2010
- 42% of the population was born in state - 2016

Colorado Job 2 Job Flows (2015)

Leading Job Inflow States		Leading Outflow States		Net flow	
Texas	11,679	Texas	10,334	Illinois	1,971
California	11,144	California	9,589	California	1,555
Florida	5,817	Arizona	5,015	New York	1,426
Arizona	5,341	Florida	4,872	Texas	1,345
			3,278		
Illinois	4,758	Washington		North Dakota	1,232
New Mexico	3,687	Utah	3,062	Utah	-37
New York	3,467	Illinois	2,787	Idaho	-131
Utah	3,025	New Mexico	2,743	Montana	-184
Kansas	2,979	Nebraska	2,287	Oregon	-623
Missouri	2,662	Kansas	2,147	Washington	-769

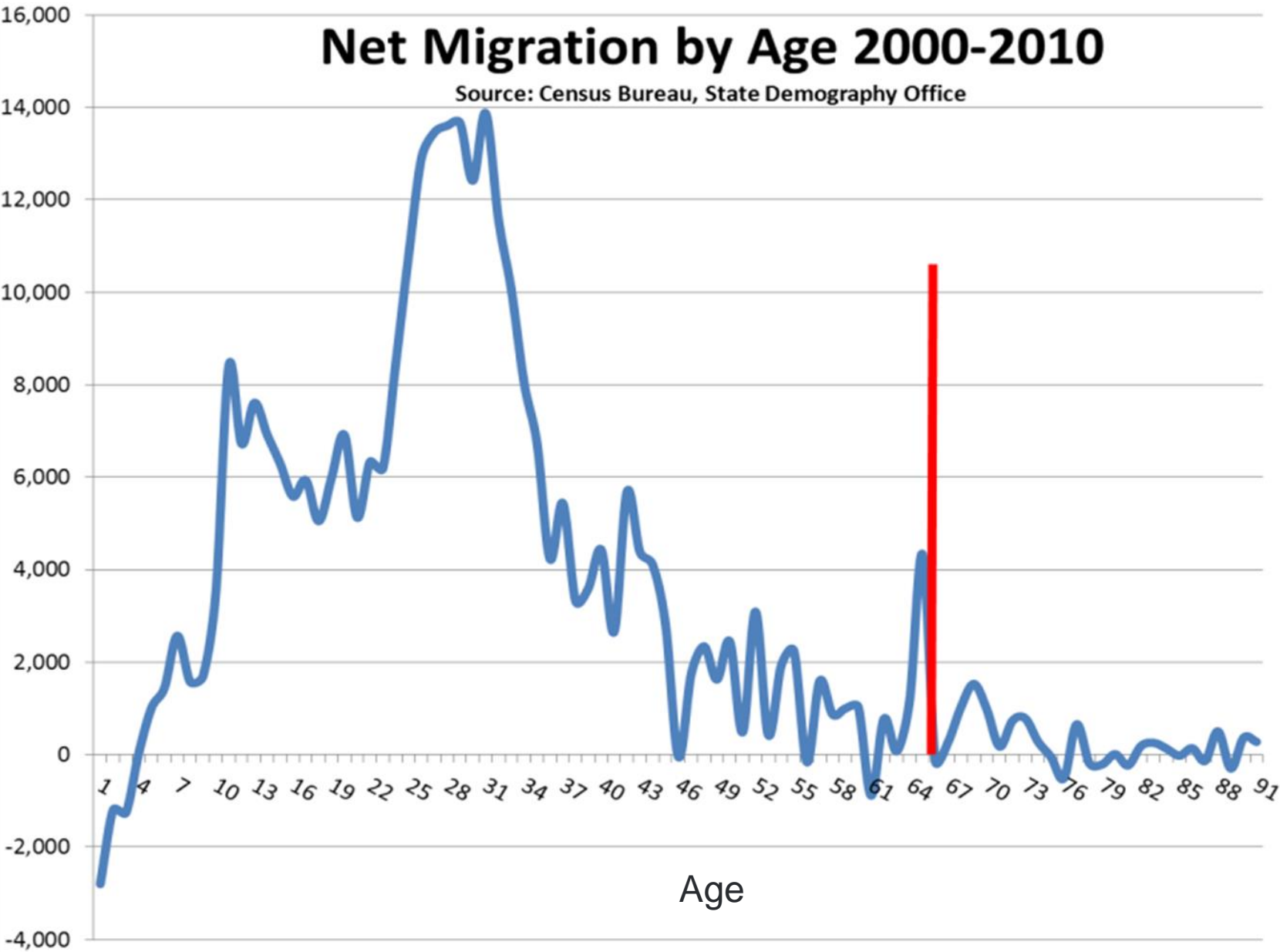
LinkedIn 2016 “Talent Trading”



Source: LinkedIn

Net Migration by Age 2000-2010

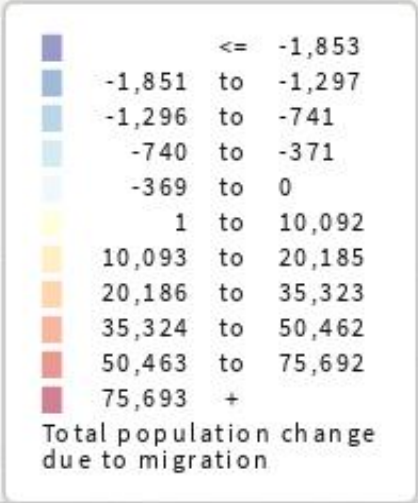
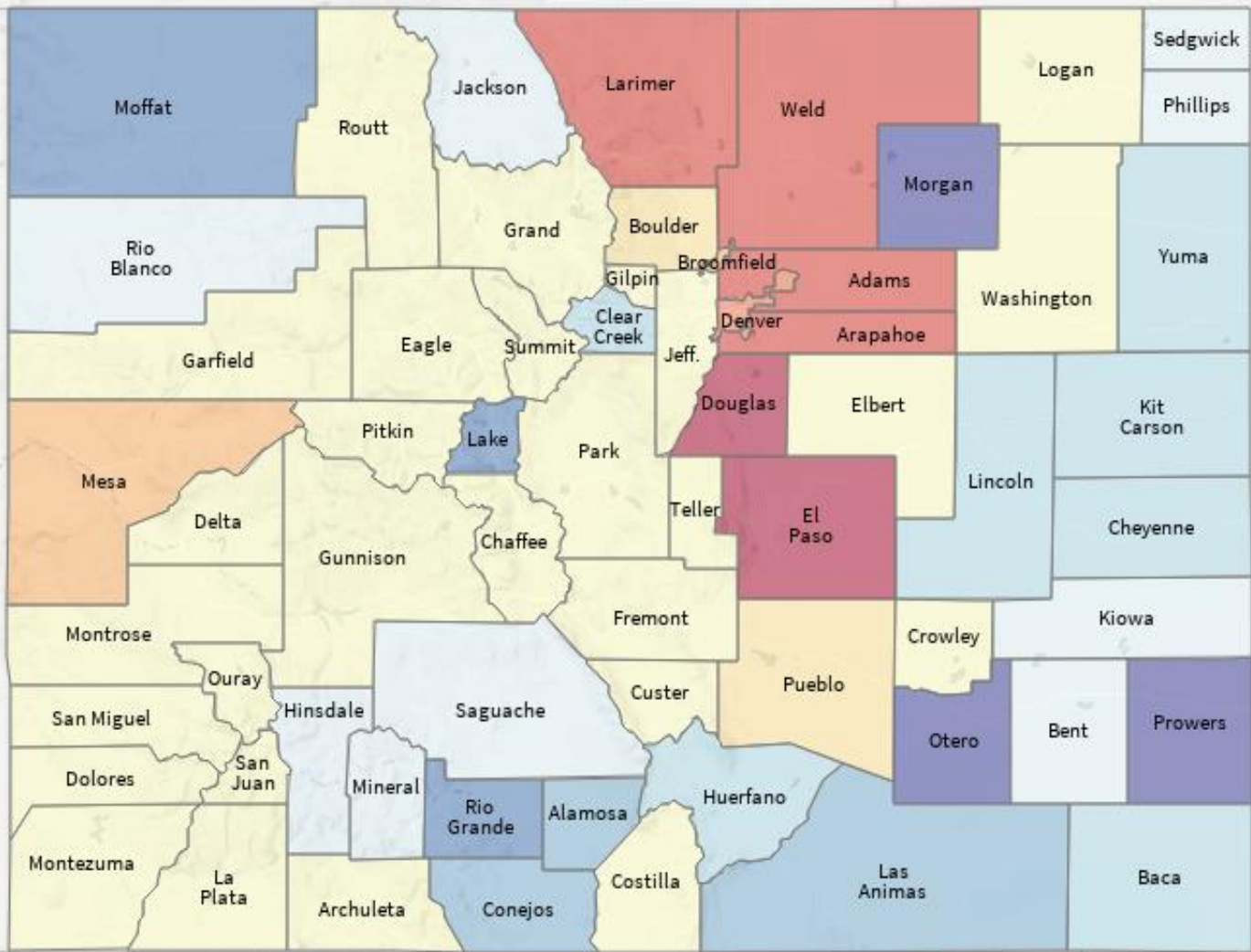
Source: Census Bureau, State Demography Office



Age

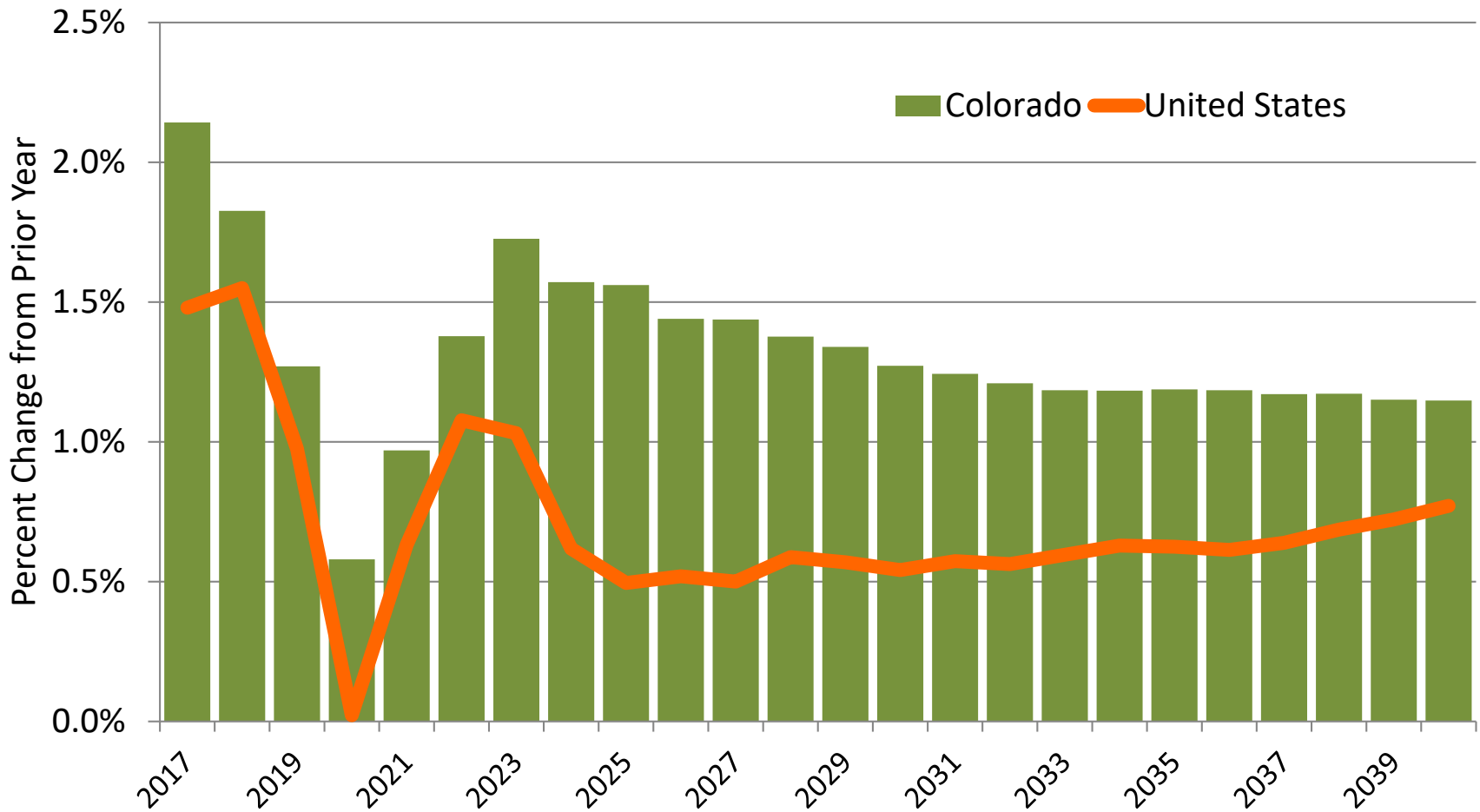


Colorado, 2000 to 2016: Total Migration

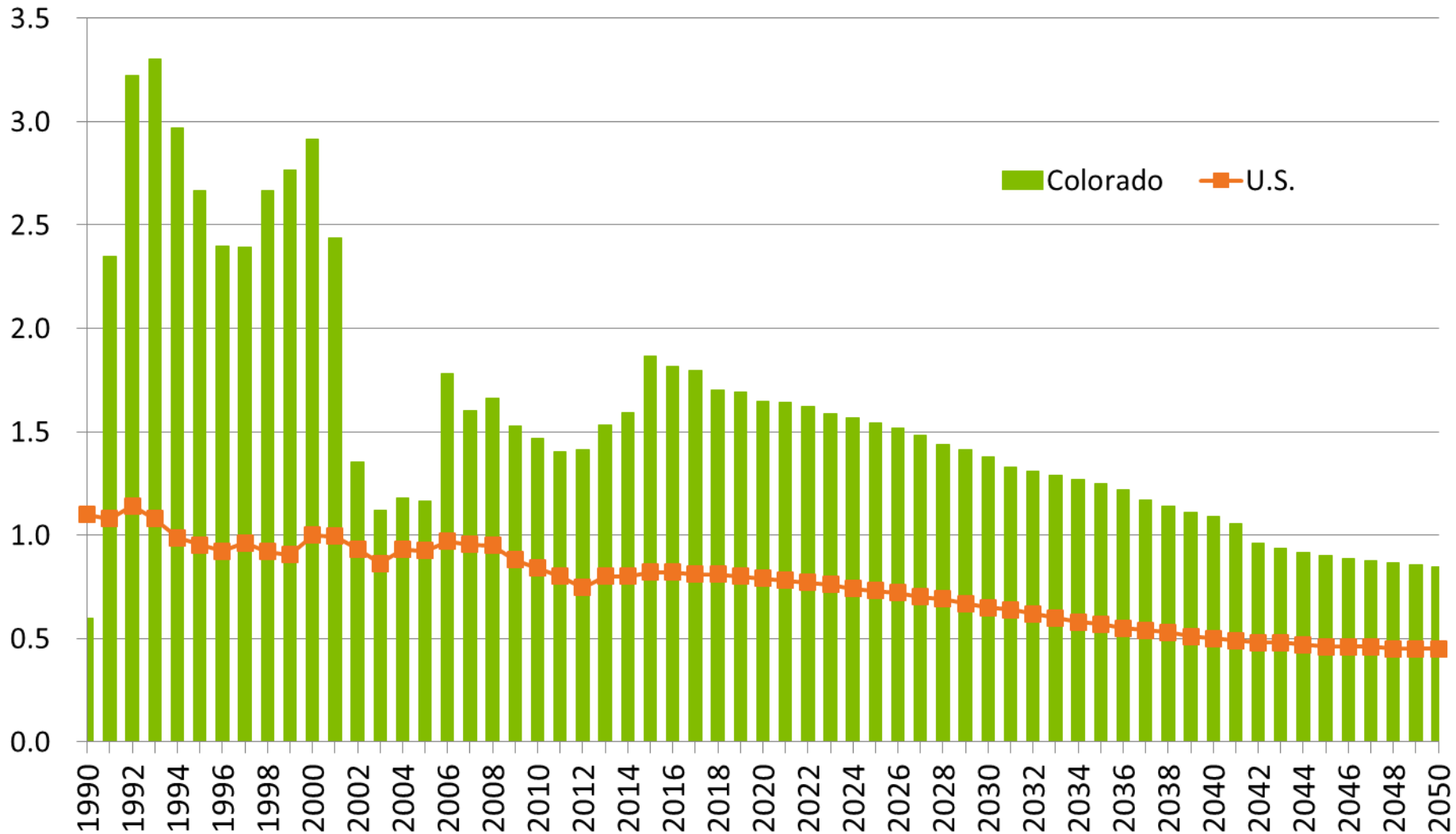


COLORADO VS. UNITED STATES ANNUAL JOB CHANGE 2017-2040

Employment Change by Year 2017-40 Forecast



Colorado and U.S. Annual Pop Growth Rates



Factors influencing CO's Pop

National Growth - National Policies - immigration

Water

Job Growth & Wage Growth (Skilled vs. Service)

Housing - supply, price, type, location

Infrastructure/Transportation

State Budget/Policy - Property & Income Taxes

Aging - age in place or move to lower cost locale?

Industry changes - automation, consolidation, downturn, bust, recession, & competitiveness.

Natural disasters - nationally

Summary Trends

Disparate growth - what is causing it and what can be done? Can linkages be created between Metro and Non-Metro.

Aging - we are getting old fast, is the state ready for the opportunities and changes to the labor force, income, industrial mix, housing, etc.

Colorado is becoming more **racially and ethnically diverse**, especially those currently under the age of 24.

Migration - how do we attract the best fit for the jobs and where do we house them? What if we can't attract?

Continued growth but at a **slower rate**.



Everything is connected - population to jobs to education to housing to daycare to eldercare to infrastructure to population...

*Thank you
Questions?*

<https://demography.dola.colorado.gov/>

Chris.Akers@state.co.us

303-864-7751



COLORADO
Department of Local Affairs